



REWARD

General Assembly - 03 Meeting

Roadmap

CONTENT

1	AGENDA	3
2	CTU MEETING VENUE	5
2.1	SOCIAL EVENT.....	6
3	SUGGESTED HOTELS	7
4	ROUTE PLAN	9

1 Agenda

REWARD 3rd General Assembly Meeting

Location: CTU in Prague

Agenda day 1 –29.05.2017			
Item No	Timing	Topic	Presenter
0	12:00	Sandwich lunch at CTU premises (Conference Centre - ground floor)	
1	13:00	Welcome by CTU	CTU
2	13.15	Welcome & announcements REWARD <ul style="list-style-type: none"> - Round the table - Meeting objectives - Agenda setting 	AVL, UNR
3	13:30	WP1: Overall technical status <ul style="list-style-type: none"> - Planning, Milestones, Risks - Feedback M18 reporting 	AVL
4	14.00	WP1: Management and administrative issues <ul style="list-style-type: none"> - M18 reporting & payment - Contractual issues 	UNR
5	14.30	WP8: Dissemination & Exploitation <ul style="list-style-type: none"> - Dissemination results and planning towards end of the project - Exploitation update - Organisation Final Event 	UNR
	14:45	Coffee Break	
6	15:00	WP update 2,3,4,5,6,7 (30 mins, including discussions) Objective: Present progress and results up to M24, next steps to finalisation	WPL
	18:00	End of Meeting day 1	
	19.00	Social Dinner in the centre of Prague (Pivnice Štupartská, Praha 1)	

Agenda day 2 –30.05.2017			
Item No	Timing	Topic	Presenter
	8.30	Start of Meeting	
6/7	9.00	If needed Continuation WP update 2,3,4,5,6,7 (30 mins each) Otherwise WP parallel sessions: focus on planning last 12 months of the project	ALL
	10:30	Coffee Break	
7	10:45	Presentation of results parallel sessions WP2,3,4,5,6,7 (15 mins each): - Planning activities next 6 months (up to M24) Results discussion Exploitable Results	ALL
	12:30	General session - Wrap up, Closure and Action Points Next meeting	AVL/UNR
	13.00	Lunch (AvantGardino Express, PPF GATE, Evropská 2690/17, Praha 6)	
	14:00	End of Meeting	
	14:15	CTU Lab Tour to VTP Rožtoky	

2 CTU Meeting Venue

CTU in Prague (ČVUT v Praze)
Faculty of Mechanical Engineering (Fakulta strojní)
Technická 4
166 07 Praha 6 - Dejvice
Czech Republic
GPS: 50°6'10.451"N, 14°23'30.016"E
www.fs.cvut.cz/en/home/



1st day – Monday, 29 May

Conference Centre at the ground floor (room No. 17)

2nd day – Tuesday, 30 May

for the general session - Room No. D1-366

for the WP parallel sessions - Rooms No. A1-304, A1-306, A1-307a, C1-310, C1-311, A2-262.



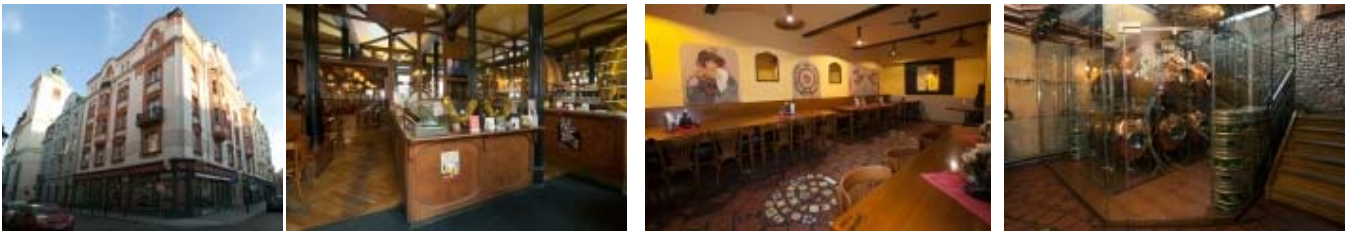
2.1 Social Event

Pivnice Štupartská www.pivnicestupartska.cz

Štupartská 745/9

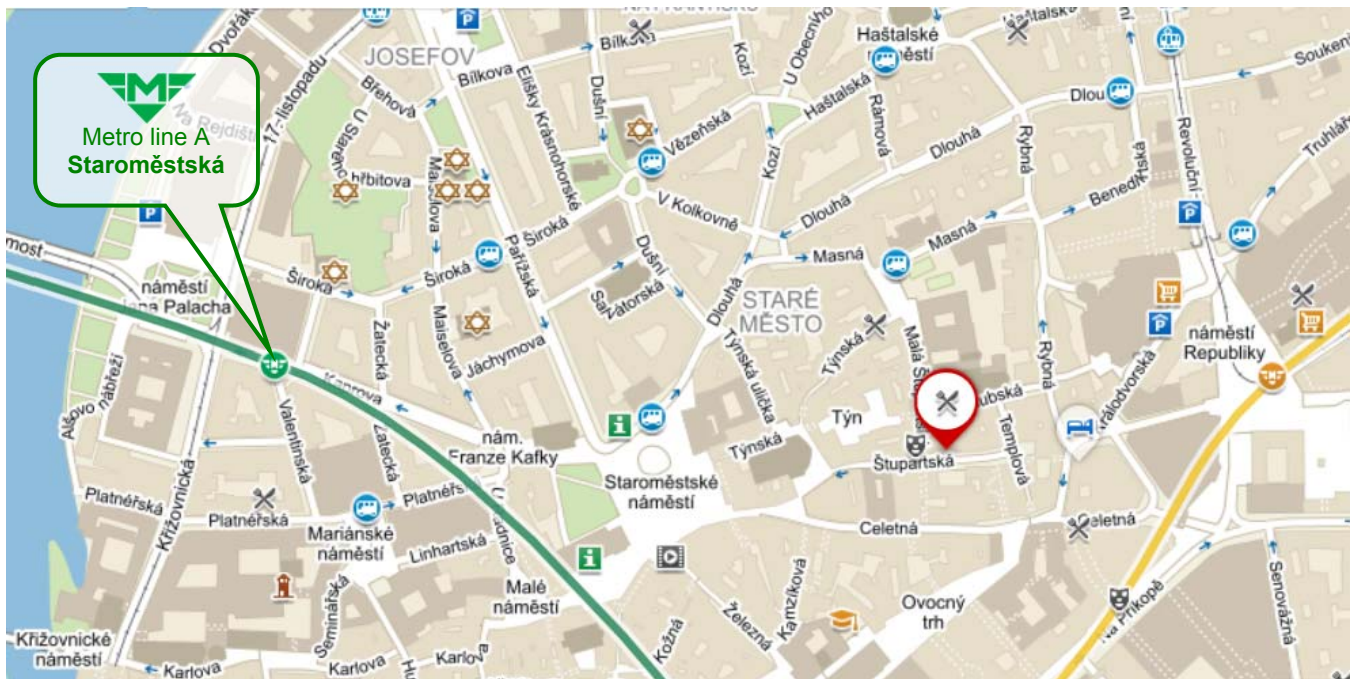
Praha 1 - Staré Město

GPS: 50°5'16.070"N, 14°25'29.343"E



How to get from the venue:

by metro – green line “A” from station “Dejvická” to “Staroměstská”, then ca 10 minutes on foot



3 Suggested Hotels

Hotels below are in the walking distance from the venue.

1. DAP www.daphotel.cz



2. Diplomat www.diplomathotel.cz



3. Meda Hotel www.hotelmeda.cz



4. International www.internationalprague.cz



5. Silenzio www.silenziohotel.cz



6. Masarykova kolej www.masarykovakolej.cz



4 Route plan

Travel options:

There is the only one airport in Prague:-))

Useful links:

Václav Havel Airport Praha: <http://www.prg.aero/en/>

Prague Public Transport: www.dpp.cz/en

Taxi:

<http://fix-taxi.cz/order?lang=en>

<http://taxi14007.cz/en/>

<http://www.aaataxi.cz/en/prague-airport-taxi/>

How to travel from the [Václav Havel Airport Praha \(PRG\)](#) to the venue:

- **by public transport** – ca. 27 minutes (www.dpp.cz/en)

Take bus No. 119 from “Terminál 2 or Terminál 1) to the last stop “Nádraží Veleslavín“ (ca. 15 mins or 17 mins). Then take metro direction “Depo Hostivař“ and get off at the station “Dejvická“ (ca. 5 mins). The meeting venue is about a 10 minute walk from there.

Find your connection from “Terminál 1” or “Terminál 2” to “Dejvická” [here](#).

Short-term ticket for 30 min. is enough – 24 CZK.

Ticket bought from the bus driver (cash is required, large banknotes are not accepted) is for 40 CZK.

Tickets for the public transport (all kinds/tram, bus, metro, funicular) can be bought at the ticket vending machines at the bus stops (only coins are accepted) or in Prague Public Transport counters (from 7 a.m. till 10 p.m.) which are located in the arrival halls of both Airport Terminals (also credit cards are accepted there).

- **by taxi**

Recommended companies are AAA Taxi, Taxi Praha 14007 or FIX Taxi (taxi service at guaranteed tariff prices, according to the number of kilometers passed).

The taxi cost to the Meeting venue should be around 300 – 400 CZK. The journey takes about 20 minutes (ca. 11 kilometres). It is advisable to agree on the fare in advance. To take a taxi, contact counters of taxi operators located at the arrival hall of Terminal 1 and 2. Departure points are situated in front of the arrival halls (FIX Taxi, Taxi Praha 14007). AAA Taxi – taxi will pick up you at the parking lot P1 or P2 Express in a few minutes, if you book it by phone or via mobile app for Android, IOS.

Notify the driver in advance, that you request a bill (printed from the taximeter, not handwritten).

Do not take a taxi if the drivers contact you in the arrival hall.

